

ACCESSORIES SUPER X1

vice
Width 55mm



S/N: 10108

Vice

Width 70mm



S/N: 10133

Quick vice



Width 50mm

S/N:10035

MT#2 collet



ø3mm	S/N:10072
ø4mm	S/N:10073
ø5mm	S/N:10074
ø6mm	S/N:10075
ø8mm	S/N:10076
ø10mm	S/N:10077
ø3-10mm set	S/N:10078

2 Flute HSS end mill



ø3mm	S/N:10067
ø4mm	S/N:10038
ø5mm	S/N:10068
ø6mm	S/N:10039
ø8mm	S/N:10040
ø10mm	S/N:10041
ø3-10mm set	S/N:10069

Mill chuck set



MT#2

Chuck dia. 3,4,5,6,8,10mm
S/N:10070

Indexable carbide
end mill



MT#2

ø16mm

S/N:10071

Stub milling machine arbor



MT#2

for slitting saw,hole ø13mm
S/N:10118

MICRO MILL

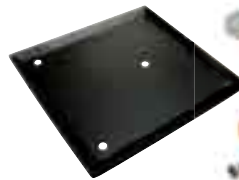
Specifications

Drilling capacity	10 mm
End milling capacity	10 mm
Face milling capacity	16 mm
Headstock travel (Z)	230 mm
Cross axis (X)	90 mm
Longitudinal axis (Y)	180 mm
Throat	140 mm
Max. distance spindle to table	220 mm
Spindle taper	MT2
Motor output power	150 W
Spindle speed	Low range 100-1000 rpm±10%
	High range 100-2000 rpm±10%
Table effective size	240x145 mm
T-slot size	8 mm
Overall dimension (LxWxH)	425x350x690 mm
Weight (Net/Gross)	32/44 kg
Packing size (LxVxH)	420x410x630 mm

Standard attachment

Ø10 mm Drill chuck Wrench set Oil can

Oil tray for X1



Size 312 x 290mm

S/N:10106



SUPER X1

MICRO MILL

Specifications

Drilling capacity	10 mm
End milling capacity	10 mm
Face milling capacity	16 mm
Headstock travel (Z)	230 mm
Cross axis (X)	130 mm
Longitudinal axis (Y)	180 mm
Throat	140 mm
Head tilt	45°L, 45°R
Max. distance spindle to table	220 mm
Spindle taper	MT2
Motor output power	150 W
Spindle speed	Low range 100-1000 rpm±10%
	High range 100-2000 rpm±10%
Table effective size	240x145 mm
T-slot size	8 mm
Overall dimension (LxWxH)	500x350x690 mm
Weight (Net/Gross)	40/56 kg
Packing size (LxVxH)	480x400x630 mm

Standard attachment

Ø10 mm Drill chuck Wrench set Oil can



Oil tray for super X1



Size 455 x 316mm

S/N:10107

